

# INSTALLATION INSTRUCTIONS FLEXIBLE MOULDINGS

ORAC<sup>®</sup>  
DECOR

INSTALLATIE VAN FLEXIBELE LIJSTEN | INSTALLATION DES MOULURES FLEXIBLES |  
INSTALLATION VON FLEXIBELE LEISTEN | INSTALACIÓN MOLDURAS FLEXIBLE |  
ISTRUZIONI PER L'INSTALLAZIONE DI MODANATURE FLESSIBILI | ИНСТРУКЦИЯ  
ПО УСТАНОВКЕ ГИБКИЕ ПРОФИЛИ

UM303 - 06/2023

Product image: SX180F



WWW.ORACDECOR.COM  
>> INSTALLATION

1

## Ready?

### ATMOSPHERE



**Storage and installation conditions: Store profiles and adhesives at room temperature and wait 24 hours before installing.**  
Opslag- en plaatsingsvoorwaarden: Plaats profielen en lijmen 24 uur vóór de installatie op kamertemperatuur.  
Conditions d'installation et de stockage: Stockez les profils et les colles à température ambiante 24 heures avant la pose.  
Lager- und Installationsbedingungen: Profile und Kleber 24 Stunden vor Verlegung bei Zimmertemperatur lagern.  
Condiciones de almacenamiento y de instalación: Colocar molduras y adhesivos en el lugar 24 horas antes de la aplicación.  
Condizioni di stoccaggio e di installazione: conservare profili e adesivi a temperatura ambiente e attendere 24 ore prima dell'installazione.  
Обязательно оставьте стеновые панели и клей на 24 часа перед монтажом в помещении под отделку.

## Ready? Set? Go!

✓ **INSTALLATION  
GUARANTEE**

### SURFACE



**Dust free**  
Stofvrij  
Sans poussière  
Staubfrei  
Libre de polvo  
Privi di polvere  
Удалите пыль



**Sand and wash surface**  
Schoor en reinig de ondergrond  
Poncez et nettoyez la surface  
Schleifen und reinigen Sie den Untergrund  
Superficie lisa y limpia  
Superficie carteggiata e pulita  
Очистите поверхность



**Flat wall & ceilings**  
Vlakke wand en plafond  
Mur et plafond plats  
Plane Wand und Decke  
Paredes y techos lisos  
Pareti e soffitti  
Выровняйте стены и потолок



**Dry**  
Droog  
Sec  
Trocken  
Seco  
Asciutto  
Высушите



**No grease**  
Vetvrij  
Sans graisse  
Fettfrei  
Sin grasa  
Assenza di grasso  
Обезжирьте

2

## Set?

### DECOFIX ADHESIVES



**Online glue calculator**  
Online lijmcalculator  
Calculateur de colle en ligne  
Online Klebrechner  
Calculadora de adhesivos online  
Calcolatore di colla online  
Калькулятор клея



**Interior, porous and dry surface**  
Binnen, poreuze en droge ondergronden  
Pose à l'intérieur, surfaces poreuses, pièces non humides  
Innen, poröse/saugfähig, und trockene Untergründe  
Interior, superficies porosas y secas  
Superficie interna, porosa e asciutta  
Для внутренних работ, пористых и сухих поверхностей

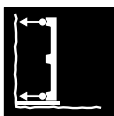


**Heavy profiles**  
Zware lijsten  
Grandes moulures  
Grosse Profilen  
Perfiles pesados  
Profili pesanti  
Тяжёлые профил

or  
of  
ou  
oder  
o  
oppure  
или



**Exterior, non-porous or humid surface**  
Buiten, niet-poreuze of vochtige ondergronden  
Pose à l'extérieur, surfaces non poreuses ou environnement humide  
Außen, nicht-poröser/saugfähige Untergrund oder Feuchträume  
Exterior, superficies non porosas o ambientes húmedos  
Superficie esterna non porosa o umida  
Для внешних работ, непористых или влажных профилей



**Seal wall/ceiling**  
Verbinding muur/plafond  
Collage mur/plafond  
Verbindung Wand/Decke  
Adherencia techos/paredes  
Collante per parete/soffitto  
Стены/потолки



### DecoFix Pro Strong, water-based acrylic installation adhesive

**FDP500** 310 ml > 7 - 8 m  
10.5 oz > 23 - 26 ft  
**FDP600** 4200 ml > 65 - 110 m  
142 oz > 213 - 361 ft

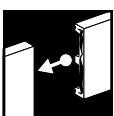


or  
ou  
oder  
o  
oppure  
или



### DecoFix Power Very strong MS-Polymer-based installation adhesive

**FDP700** 290 ml > 7 - 8 m  
9.8 oz > 23 - 26 ft

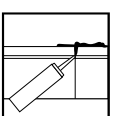


**Joints between mouldings**  
Verbinding tussen profielen  
Joints entre les profils  
Nahtverbindungen zwischen Profilen  
Uniones de los perfiles  
Giunte tra i profili  
Стыки между профилями



### DecoFix Ultra Polymer-based white adhesive

**FX400** 270 ml > min. 80 m  
9.13 oz > min. 262 ft



**Finish seams with DecoFiller**  
Werk naden af met DecoFiller  
Finissez les coutures avec DecoFiller  
Nähte mit DecoFiller versiegeln  
Acabar las costuras con DecoFiller  
Rifinire le giunte con DecoFiller  
Заделайте все швы с помощью DecoFiller



### DecoFiller Ready to use lightweight acrylic filler

**FL300** 310 ml > 30 m  
10.5 oz > 98 ft

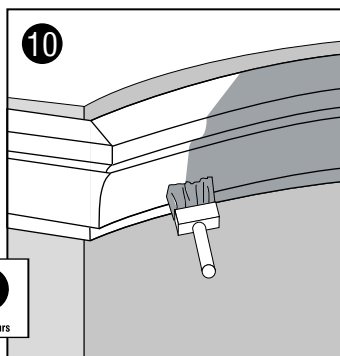
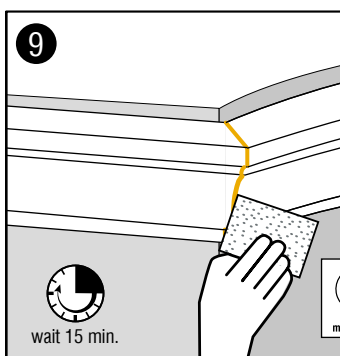
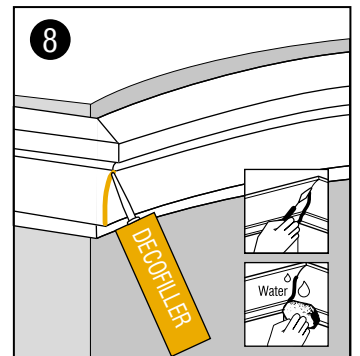
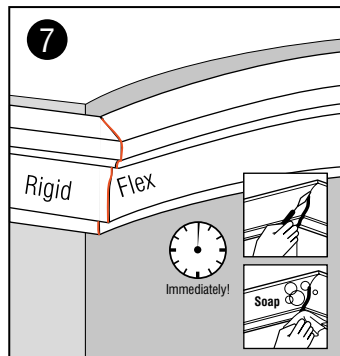
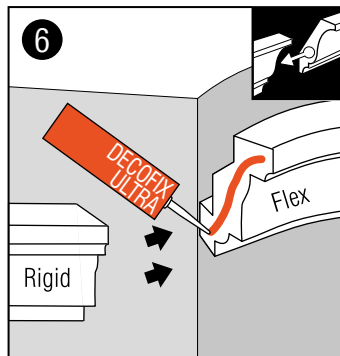
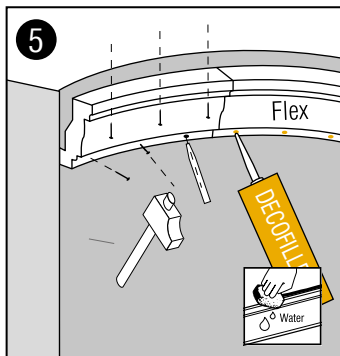
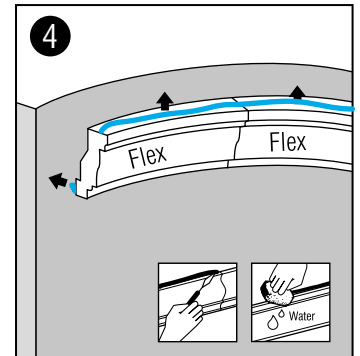
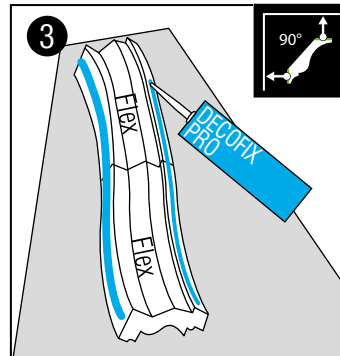
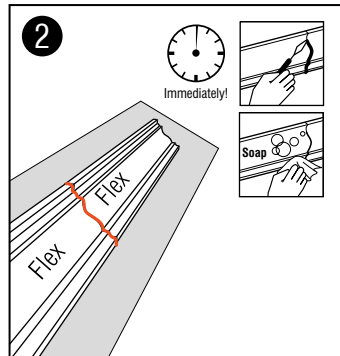
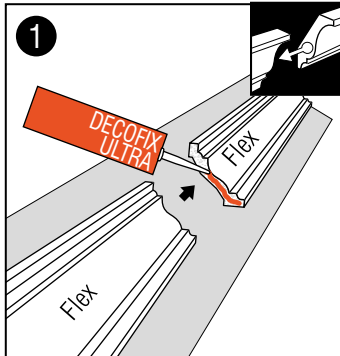


# INSTALLATION INSTRUCTIONS FLEXIBLE MOULDINGS

Also see general instructions for mounting | Zie ook de algemene instructies voor montage | Voir aussi les instructions générales pour montage | Siehe auch allgemeine Instruktionen für Montage | Ver instrucciones generales para montaje | Vedi anche le istruzioni generali per il montaggio | Также смотрите общие инструкции по установке

## ONLY FULL GUARANTEE WITH DECOFIX

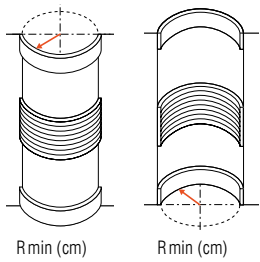
VOLEDIGE GARANTIE ENKEL BIJ GEBRUIK VAN DECOFIX  
GARANTIE TOTALE UNIQUEMENT AVEC COLLE DECOFIX  
VOLLSTÄNDIGE GARANTIE NUR BEI DER VERWENDUNG VON DECOFIX  
GARANTÍA COMPLETA SOLO SI SE UTILIZA DECOFIX  
GARANZIA COMPLETA SOLO CON DECOFIX  
ГАРАНТИЯ НА ПРОДУКЦИЮ ДЕЙСТВУЕТ ТОЛЬКО ПРИ ИСПОЛЬЗОВАНИИ КЛЕЯ DECOFIX



# OVERVIEW ORAC FLEX

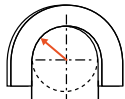
## Overview radius of bending

Overzicht straal van buigingen  
 Aperçu du rayon de courbure  
 Übersicht Biegeradius  
 Resumen radio de curvatura  
 Panoramica raggio di curvatura  
 Обзор радиусов

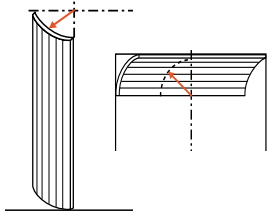


R min (cm)

R min (cm)



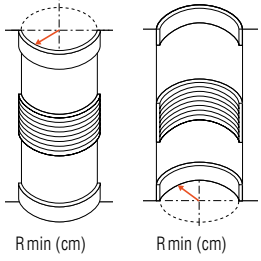
R\* min (cm)



R\*\* min (cm)

Flex Radius	R min (cm)	R* min (cm)	Flex Radius	R min (cm)	R* min (cm)	Flex Radius	R min (cm)	R* min (cm)	Flex Radius	R min (cm)	R* min (cm)	Flex Radius	R min (cm)	R** min (cm)
<b>C211F</b>	250		<b>CX100F</b>	200		<b>SX104F</b>	40		<b>DX174F</b>	60	300	<b>W108F</b>	30	40
<b>C213F</b>	280		<b>CX106F</b>	360		<b>SX105F</b>	30		<b>P3020F</b>	50	180	<b>W109F</b>	30	40
<b>C215F</b>	160		<b>CX109F</b>	160		<b>SX118F</b>	40		<b>P4020F</b>	40	200	<b>W110F</b>	30	40
<b>C217F</b>	380		<b>CX110F</b>	180		<b>SX137F</b>	40		<b>P4025F</b>	70		<b>W111F</b>	30	40
<b>C220F</b>	400		<b>CX123F</b>	280		<b>SX138F</b>	40		<b>P5021F</b>	20	70	<b>W114F</b>	30	40
<b>C230F</b>	150		<b>CX124F</b>	160		<b>SX155F</b>	30		<b>P7070F</b>	30	230	<b>W116F</b>	30	40
<b>C240F</b>	270		<b>CX127F</b>	240		<b>SX157F</b>	35	260	<b>P8020F</b>	40	130	<b>W119F</b>	30	40
<b>C250F</b>	70		<b>CX132F</b>	70		<b>SX162F</b>	20	80	<b>P8030F</b>	20	70			
<b>C304F</b>	250		<b>CX188F</b>	110		<b>SX163F</b>	35		<b>P8040F</b>	30				
<b>C321F</b>	140		<b>CX189F</b>	90		<b>SX165F</b>	40		<b>P8050F</b>	80	200			
<b>C325F</b>	300		<b>CX190F</b>	30	130	<b>SX172F</b>	35		<b>P9010F</b>	40	310			
<b>C326F</b>	500		<b>CX199F</b>	200		<b>SX173F</b>	45		<b>P9050F</b>	20	60			
<b>C331F</b>	420					<b>SX180F</b>	45		<b>P9900F</b>	20	250			
<b>C333F</b>	300					<b>SX182F</b>	35	100	<b>PX103F</b>	20	80			
<b>C334F</b>	380					<b>SX183F</b>	40		<b>PX120F</b>	30	110			
<b>C339F</b>	380					<b>SX184F</b>	45		<b>PX144F</b>	20	220			
<b>C341F</b>	400					<b>SX187F</b>	40		<b>PX175F</b>	30	80			
<b>C373F</b>	100					<b>SX194F</b>	25	80	<b>PX198F</b>	70				
<b>C901F</b>	600					<b>SX195F</b>	30		<b>PX201F</b>	30	80			
<b>C902F</b>	600								<b>PX202F</b>	60	150			
									<b>PX209F</b>	20	70			

## CONSTRUCTION EXAMPLES



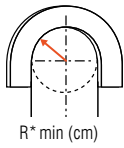
SX180F | SX180



SX183F | SX183



C321F | C321



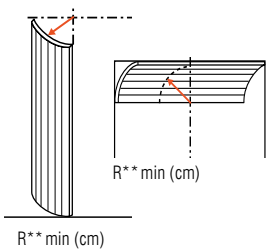
PX103F | PX103A | PX103  
C338B



CX190 | W110



P9010F | P9010



W110F | W110  
W121 | W123 | W120 | W122



W109F | W109